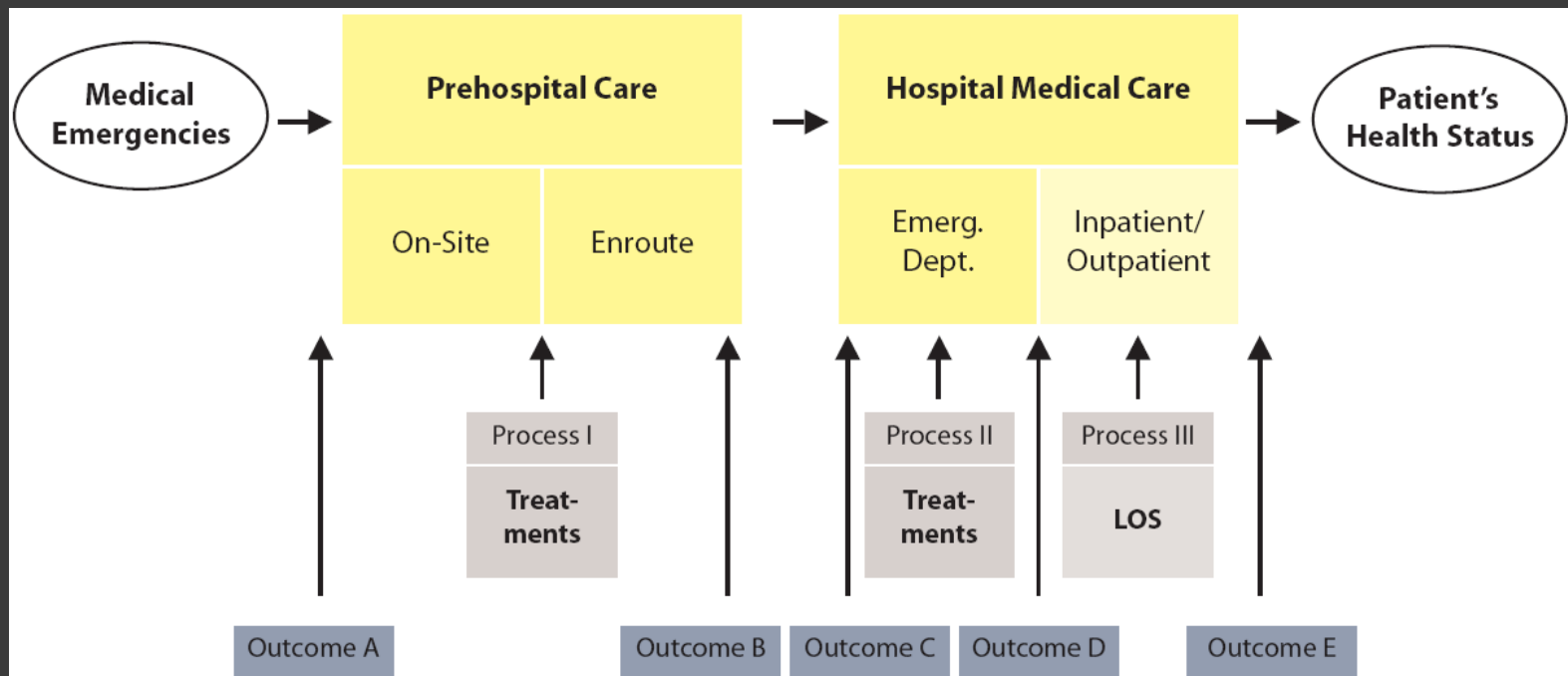


Andreas Krüger  
Stiftelsen Norsk Luftambulans  
Klinikk for anesthesi og akuttmedisin St. Olavs Hospital  
NTNU

# LEGE BEMANNET UTRYKNINGSTJENESTE I SKANDINAVIA- GJØR DE NOEN FORSKJELL?



# Hva menes med “forskjell”?



**Table 4** Unadjusted and adjusted odds ratios for survival of trauma victims

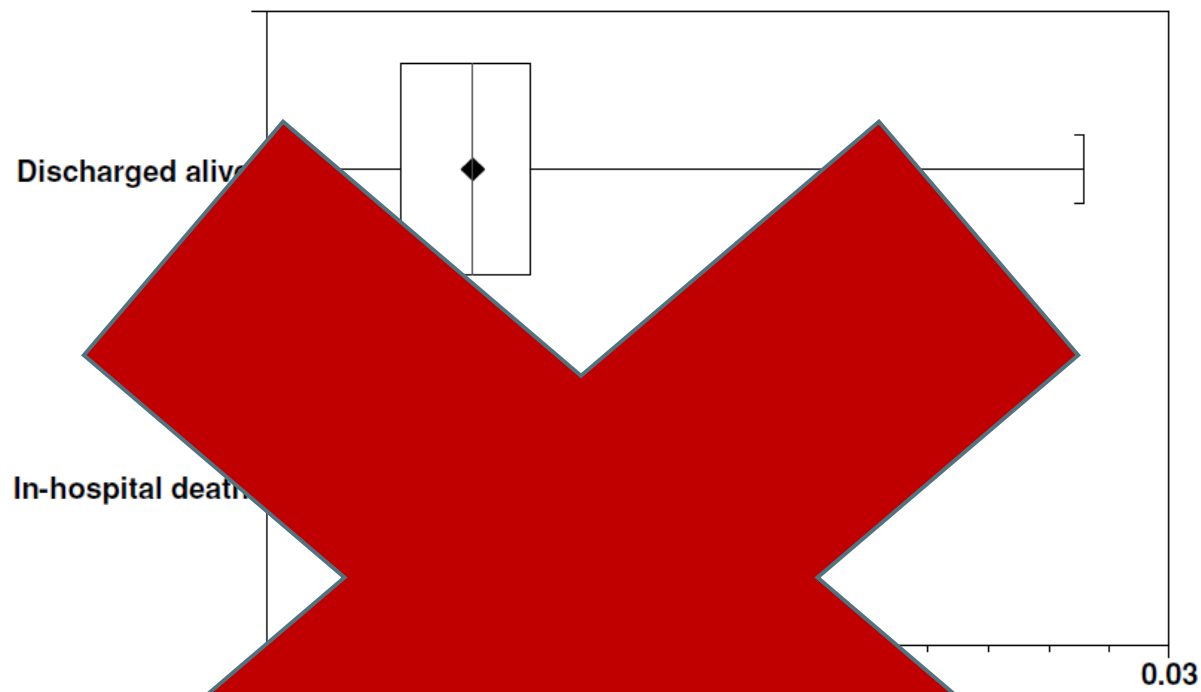
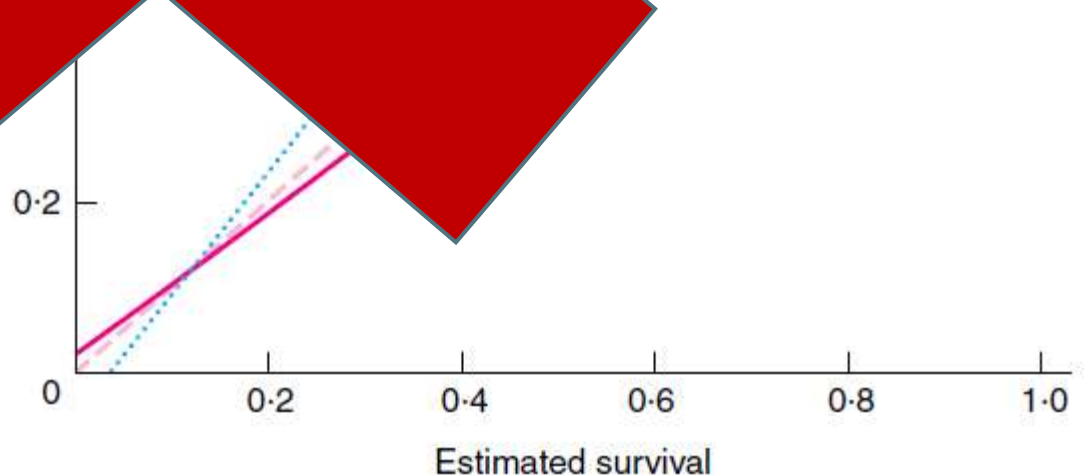


FIGURE 2. Box-and-whisker plots of survival. Median values are represented by the vertical lines within each box and whiskers represent the minimum to maximum ranges.

Gender—  
 Age—me  
 (n) Interv  
 Call to  
 Call to  
 Patients with on-scene ROSC—  
 Survivors—no. (%)

\* $P < 0.05$   
 †Indicates difference between proportions, described in the "Methods" section  
 ‡Indicates difference between means, described in the "Methods" section  
 §Indicates significance, described in the "Methods" section  
 HEMS = helicopter emergency medical service  
 circulation.



# Potensialet avhenger av systemet



# Pasientbehandleren

ScanDoc 1b



Protokoll:

14 dager sommer  
14 dager vinter

Registrering av ALL virksomhet

- Operative data
- Pasientdata
- Nyttevurderinger
- Utfall

# Seg selv nok?



**Table 2**  
Structural characteristics by country.

		Finland	Sweden	Denmark	Norway
Service area 1000 km <sup>2</sup>	Median, range	35 (0.19–85)	33 (6.5–75)	2.25 (0.03–7.9)	33 (5.6–300)
Population covered	Median	679,500	1,400,000	308,603	307,545
	Range	438,000–850,000	260,000–1,900,000	100,000–1,200,000	67,000–2,150,000
Additional medical crew (typical composition)	Nurse	0	3	1	0
	EMT or paramedic	4	0	10	14
	2 paramedics	1	0	0	0
	Paramedic and fireman	1	0	0	0
	Nurse and paramedic/EMT	0	1	0	1
Operating hours	24/7	6	4 <sup>a</sup>	7	15
	Daytime only	0	0	4	0
Transportation mode	Helicopter	0	1	0	4
	Helicopter/car	5	2	0	11 <sup>b</sup>
	Ambulance/car	1	1 <sup>c</sup>	11	0
SAR-capability	Service capable?	50%	25%	0%	93%
Funding	Public	1	4	11	15
	Public + private	5	0	0	0
Dispatch centre	Local	0	0	2	3
	Regional	4	4	9	12
	National	2	0	0	0
EMS-system responsibilities <sup>d</sup>	Advisory	5/6	3/4	11/11	11/15
	Supervisory	4/6	1/4	10/11	6/15

# Stor forskningsaktør ?



430

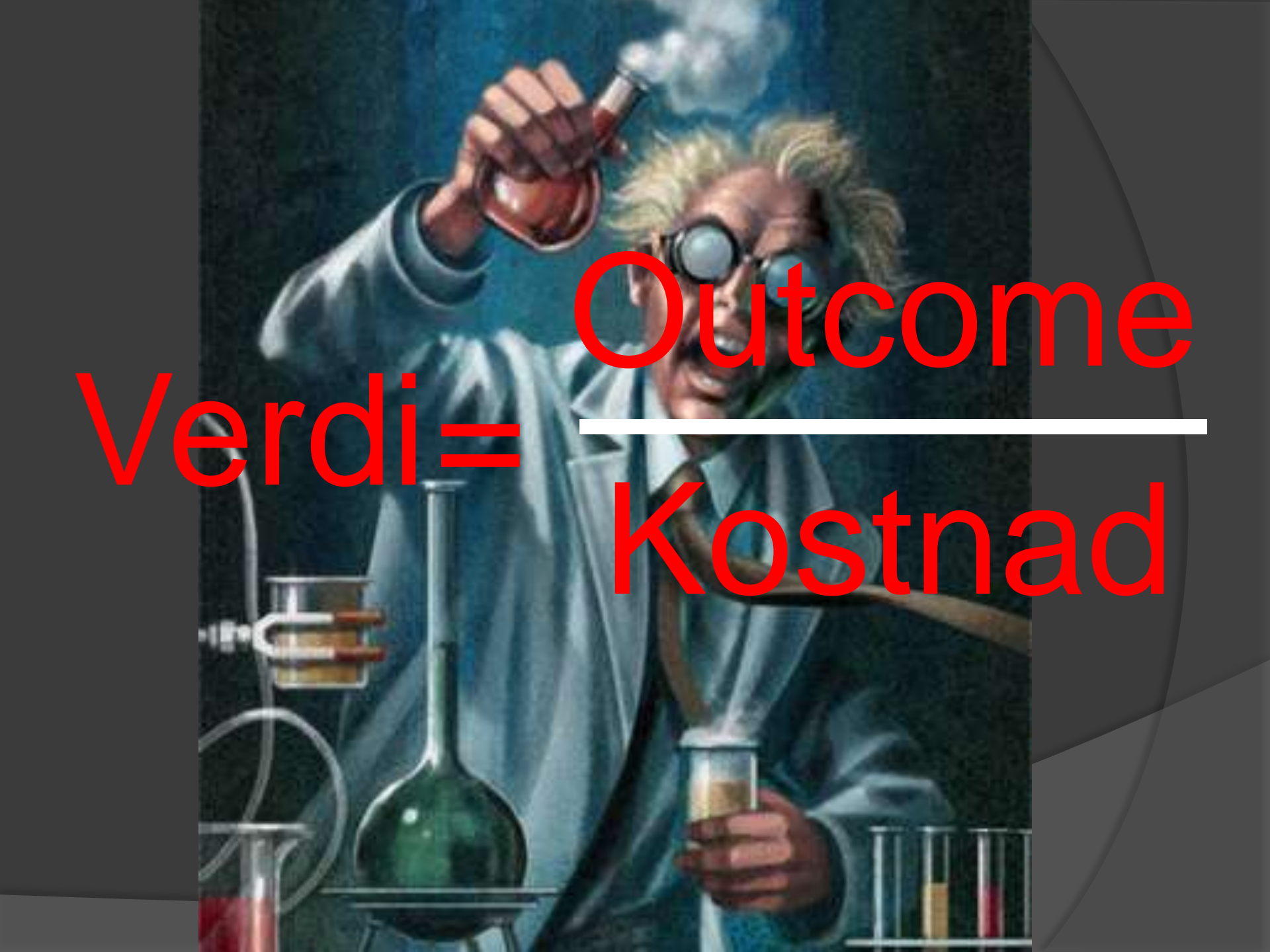
A.J. Krüger et al. / Resuscitation 81 (2010) 427–433

**Table 1**  
Staffing physician characteristics per service by country.

		Finland	Sweden	Denmark	Norway
No. of physicians	N, range	15 (6–18)	12 (5–100)	16 (9–39)	10 (5–12)
Gender distribution	% male, median	71	76	81	90
Pre-hospital medical experience	Years, median and range	3,5 (3–8)	9 (3–13)	5 (4–17)	8 (5–15)
Educational level	Specialists only	1	4	9	5
	In training, only	0	0	1	0
	Mixed	5	1	0	10
Required specialty	Anaesthesiology	2	4	11	15
	Internal medicine	1 <sup>a</sup>	0	0	0
	None	3 <sup>a</sup>	1 <sup>b</sup>	0	0
Expertise in neonatology	Yes	1	1	1	7
	Yes, with additional personnel	1	1	1	4
	No	4	3	8	4
Scientific activities	Publications	3 (3–4)	0 (0–1)	3 (0–5)	1 (0–6)
	Abstracts	2 (1–3)	0 (0–1)	3 (0–10)	4 (0–6)

<sup>a</sup> Services require competence in anaesthesiology.

<sup>b</sup> Mostly emergency physicians and anaesthesiologists.

A scientist with wild, spiky blonde hair and large round glasses is shown in a laboratory setting. He is wearing a white lab coat over a light blue shirt and a brown tie. He is holding a round-bottom flask containing a red liquid, which he is pouring into a beaker held in his other hand. The background is dark with a blue sky and white clouds. In the foreground, there is a large green round-bottom flask on a stand, a rack of test tubes with colored liquids, and other laboratory equipment.

Verdi = Outcome  
Kostnad

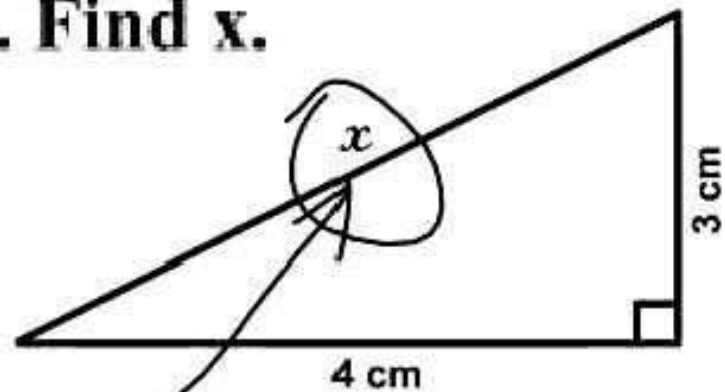
# Gjør legebemannet utrykningstjeneste noen forskjell?



**Definitivt JA**

Answer on a blonde's Geometry test

**3. Find  $x$ .**



*Here it is*